



SWAPNOPURON WELFARE SOCIETY



ANNUAL REPORT 2022-23



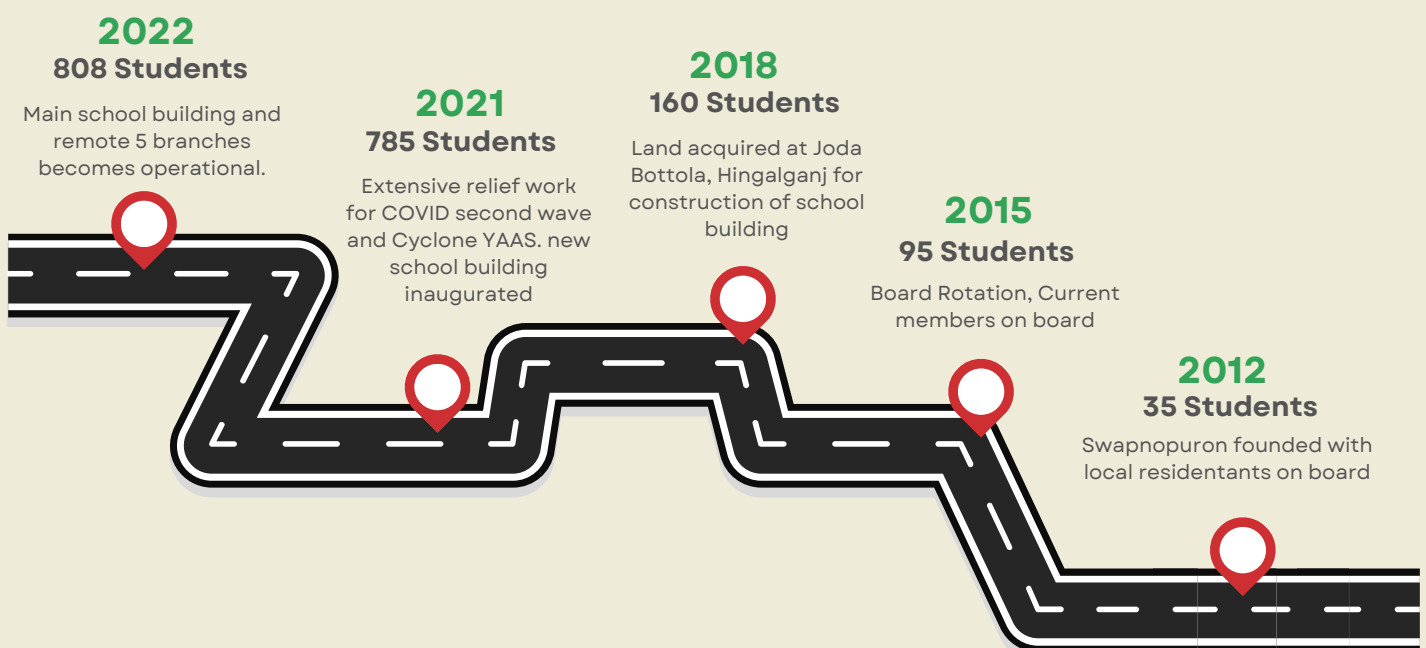
TABLE OF CONTENTS

About Us & Education Centre's	1-2
President & Founder's Note	3-5
Mission, Vision & Belief	06
Impact at a Glance	07
Uniqueness of Our Educational Journey	8-11
Main School & Branches	12-16
Teacher Capacity Building	17-18
Volunteers & Intern	19-20
Exposure and Educational Visits	21
Child Protection & Adolescent health	22-23
Woman Empowerment & Skill Building	24-25
Environment	26
Stories of Change	27-28
Awards & Media Coverage	29-30
Fundraising Insights	31-32
Financial Report	33-39
Challenges & Way Forward	40-41
Board Members Introduction	42
Main School Building Progress Report	43
Contributor Invitation	44



ABOUT KATAKHALI SWAPNOPURON WELFARE SOCIETY

In the enchanting yet formidable expanse of the Sunderbans, where the tangled mangrove forests weave a tapestry of challenges, the pursuit of quality education seemed like an unattainable dream. Swapnopuron, however, defied the odds and turned the impossible into reality. Venturing courageously into the remotest reaches of the Sunderbans, Swapnopuron emerged as a transformative force, unlocking the doors to education in areas where such opportunities were once scarce. From its modest beginnings with just 25 students in 2012, Swapnopuron has blossomed into an institution with over 850 active students and 37 dedicated teachers by the year 2023.





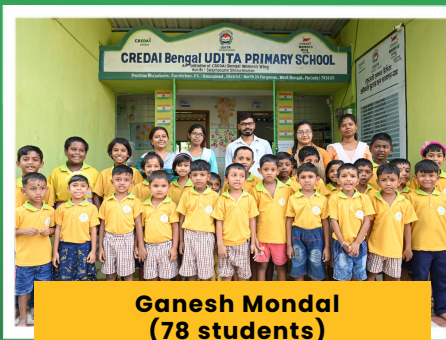
SWS SCHOOL LOCATIONS

MAIN SCHOOL & BRANCHES

The main school accommodates over 350 students, spanning from Nursery to class IX. Our four branches—Ganesh Mondal, Choto Sahebkhali, Bena, and Kalitala—are strategically situated on the remote island of Sundarbans, serving a student population of over 400, ranging from Nursery to class V.



MAIN SCHOOL (350+ STUDENTS)



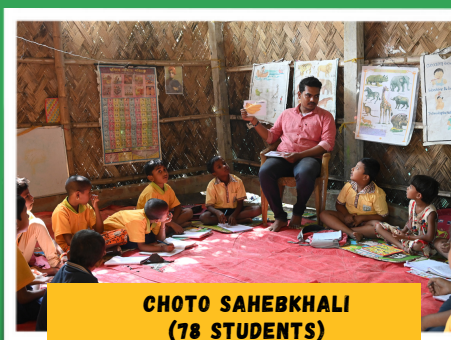
Ganesh Mondal (78 students)



Bena (135 students)



**KALITALA (90 STUDENTS)
KALITALA AFTER SCHHOL (35 STUDENTS)**



CHOTO SAHEBKHALI (78 STUDENTS)

President's Note



RADHA ARAKKAL

Greetings from Swapnopuron! Barack Obama once famously said "Change will not come if we wait for some other person or some other time. We are the ones we've been waiting for. We are the change that we seek."

I do believe that Satarupa and her able and inspired team in the Sundarbans live this tenet every moment. I am truly grateful for, and deeply inspired by their commitment and energy.

Working in remote rural areas teaches you very early that education is low priority for a family struggling to put food on

the table. Yet the aspiration of the family is that their children will study and have the capacity to earn and live a better life. An English medium education is a ticket out of the clutches of poverty. In this context Swapnopuron has believed in the overall upliftment of the community.

This past year, FY 22-23, has been another action-packed year.

The Swapnopuron Shiksha Niketan school grew from strength to strength. Including the main school at Katakhal and the 4 branch schools the school provided 808 children with holistic, quality English medium education. Compare this to 250 children in 2020 at the start of the pandemic!

Over the years, we have witnessed a gradual shift in parent attitudes towards girls in the community.

As an outsider it is gratifying to see young adolescent girls in the school, knowing they will complete their education and one day become the solid support their family needs.

An important development was the setting up of the first STEM Lab in the main school building in Katakali. Schools in the region do not have good laboratory facilities and most children are forced to take up arts or commerce subjects in higher classes. In due course the lab will be made available to children from government schools too so that no child is deprived of pursuing his/ her passion for science.

Programs other than education included child protection & safety, menstrual hygiene and livelihood programs for mothers and farmers in the community. As part of this, we implemented tree plantation drives including

100,000 mangrove saplings and 250,000 vetiver saplings, supported by the Sri Sri Institute of Agricultural Sciences and Technology Trust.

Overall, Swapnopuron has stayed the course to ensure the overall upliftment of the community in the region. I salute the teams on the ground- our beloved teachers, our social workers and staff, for making all this happen and wish them the very best. They are our brave soldiers on the frontline, marching on with purpose. I salute Satarupa Majumder, the founder of Swapnopuron, for leading this team from the front and firing their hearts with inspiration.

Heartfelt thanks to our donors and well-wishers for believing in Swapnopuron's vision and enabling this momentous change.

Founder's Note



joy and laughter, marking a triumphant return to a positive learning environment. During this transformative period, Swapnopuron seized opportunities for growth, extending its reach to establish schools in other islands.

SATARUPPA MAJJUMDAR

Over the past two challenging years, Swapnopuron's dedicated educators played a pivotal role in inspiring students, parents, and the community to persevere in their educational journey. True to their commitment, the teachers demonstrated humility by evolving alongside their students.

In the face of adversity, the educators at Swapnopuron exhibited unwavering determination, ensuring that education remained a constant for the children. The school's halls, once filled with challenges, now resonated with the sounds of

Early education centers blossomed in Bena, Ganesh Mondal, Choto Sahebkhali and Kalitala offering comprehensive school programs. Noteworthy accomplishments included inaugurating new school buildings in Ganesh Mondal and Kalitala, unveiling the main school library, and introducing the first STEM lab in the heart of the Sunderbans.

This report serves as a window into the world of the "Unstoppables," recounting tales of resilience, hope, and joy that define Swapnopuron's remarkable journey over the past year.

MISSION

To empower children with holistic, quality education. To create a safe, fair community through building knowledge and livelihoods.

VISION

A safe empowered community where every child has an equal chance to realize his/her full potential.

BELIEF

With focus on quality holistic education, we believe in following three pillars and all our activities are aligned accordingly:

Curriculum: Early childhood education builds a strong foundation for a child's future – A crucial element for the success of a program lies in a curriculum that empowers teachers to act as facilitators in a child's developmental journey. Pedagogy, teaching-learning materials, ease of use are the key elements SWS focuses on.

Teachers: Teachers undeniably are the force behind the school. They play a critical role in the implementation of curriculum, helping children reach developmental milestones, assessing progress, motivating and stimulating a child's learning abilities, fostering curiosity.

Community Engagement: Parents and families, are the first and most influential educators of children. Recognizing the importance of parental involvement in early childhood care and education, SWS focuses on close engagement with parents.



IMPACT AT A GLANCE

PROGRAM	PROJECTS	IMPACT
EDUCATION	Early Childhood Enrollment	<ul style="list-style-type: none"> • 300 new students enrolled • Main School (120), Bena (32), Ganesh Mondal (58), Choto sahebkhali (18), Kalitala (30)
	Education Sponsorship	<ul style="list-style-type: none"> • 600 students benefitting under this. • 280 girls & 120 boys from Nursery to VII
	Education Kit	<ul style="list-style-type: none"> • Distributed 500 education kits with pre-primary and primary-level students as essential home learning aids.
CHILD PROTECTION & ADOLESCENTS	Rubella Vaccination	<ul style="list-style-type: none"> • 200 students vaccinated in Main School, Hingalganj.
	SAG-KP Program	<ul style="list-style-type: none"> • 124 students benefitted in the age group of 11-18.
	Child Protection & Awareness	<ul style="list-style-type: none"> • 650 girl children in Hingalganj were covered under these workshops
	Regular Counselling Program:	<ul style="list-style-type: none"> • A year-long regular counseling program runs in every school of Swapnopuron, benefiting over 800 students and parents.
SKILL BUILDING & WOMEN EMPOWERMENT	Candle, Soap, Papad Making	<ul style="list-style-type: none"> • 100 women were trained
	Kitchen Garden Training	<ul style="list-style-type: none"> • 50 families
	Professional Beautician Training	<ul style="list-style-type: none"> • 50 young women
	Fish Farming Training	<ul style="list-style-type: none"> • 300 local families
	Training on Fish Value Addition	<ul style="list-style-type: none"> • 90 women benefitted
ENVIRONMENT	Mangrove Plantation	<ul style="list-style-type: none"> • 50,000 mangrove saplings planted
	Vetiver Saplings	<ul style="list-style-type: none"> • Planted 2,50,000 vetiver saplings.

EDUCATION



Unique approach to Pedagogy



Education Kit



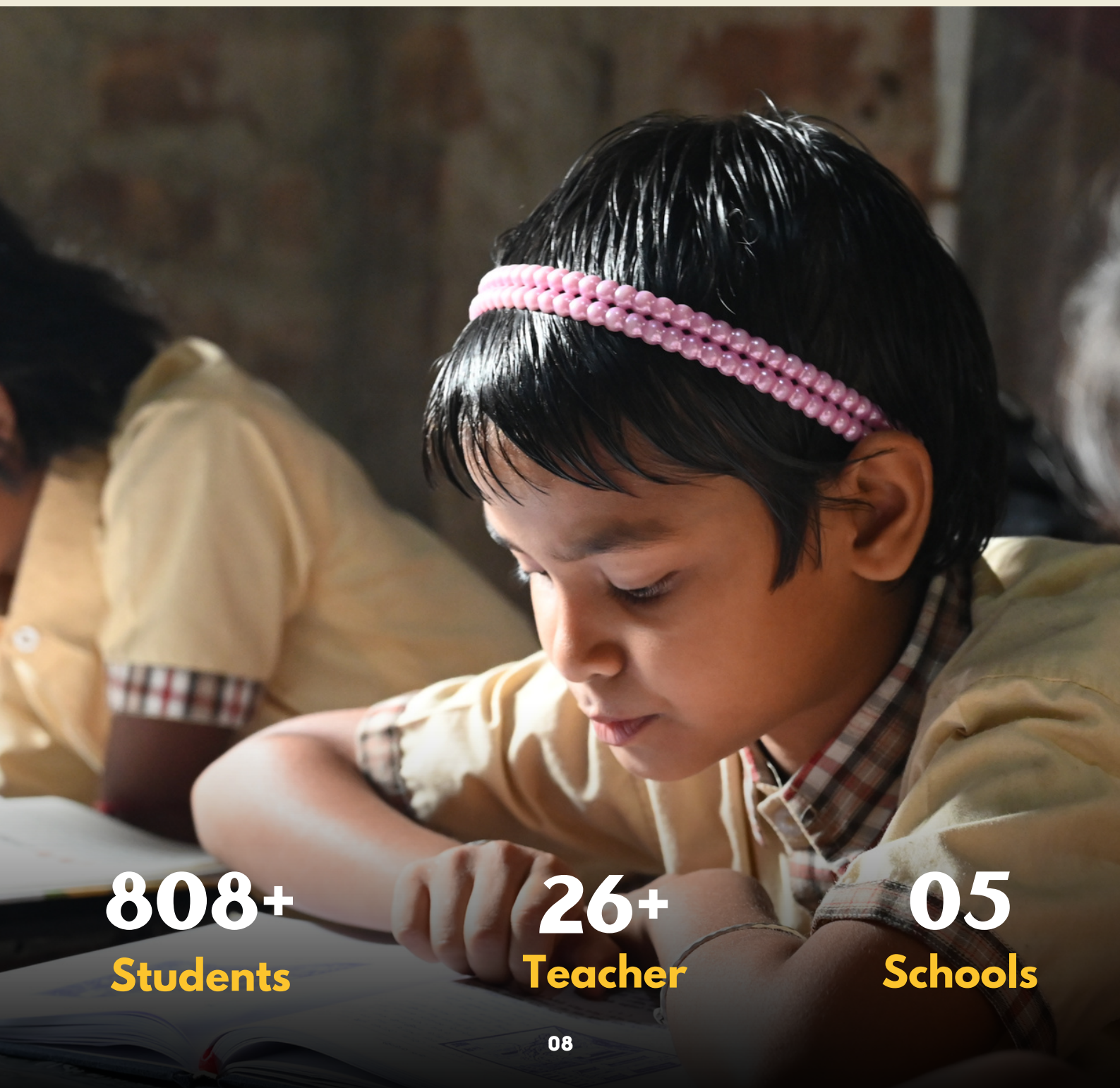
Dynamic Teaching Tools



SWS Main School & Branches



Teacher Capacity Building



808+
Students

26+
Teacher

05
Schools



UNIQUENESS OF OUR EDUCATIONAL JOURNEY



Pedagogical Approaches: Integrating Montessori principles, playway methods, hands-on activities, and exercises of practical life for pre-primary classes.



Curriculum Adherence: Following an age-appropriate English medium school curriculum based on the NCERT guidelines.



Experiential Learning: Adopting experiential and multi-grade, multi-label teaching methods for other classes as necessary.



Technology as a Learning Aid: Providing an early introduction to computer and STEM education.



Community Engagement: Conducting intensive community visits and consistent follow-up to enhance enrollment of children in school.



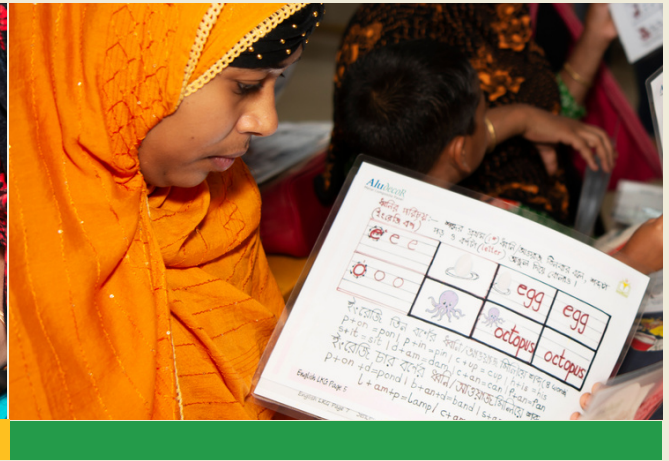
Parental Involvement: Actively encouraging parents' participation in their child's learning and development journey.



Adult Functional Literacy: Facilitating adult functional literacy to empower parents and strengthen community ties.

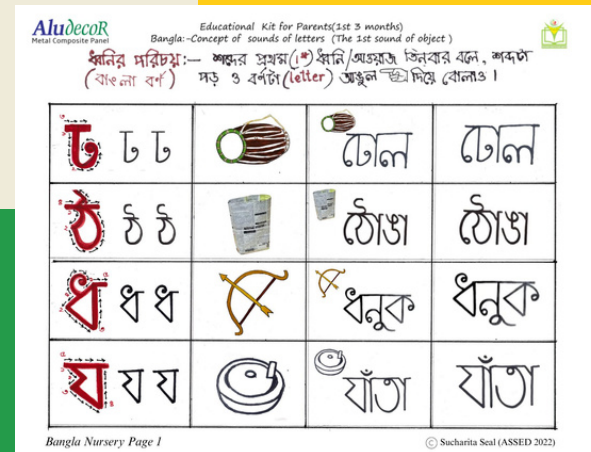


Psychological Support: Offering regular counseling by in-house counselors to support students, parents, and the community.



EDUCATION KIT

In collaboration with Aludecor, we embarked on a mission to distribute 500 education kits, aimed at providing pre-primary and primary-level students in Hingalganj with essential home learning aids. Hingalganj's predominantly first-generation learners lacked academic support at home. Recognizing the importance of parental involvement, we aimed to equip parents to engage with their children's studies



Understanding the limitations, we designed simple, book-free learning aids suitable for even parents with basic literacy. Repetition, crucial for skill retention, became feasible, fostering a stronger foundation in literacy and numeracy. Implemented on a small scale initially, the learning aids yielded positive results. Children displayed improved academic performance, a stronger grasp of subjects, and increased enthusiasm for education. Family engagement with a child's education saw a notable rise.

DYNAMIC TEACHING TOOLS

DAILY LESSON PLANS

Subject-matter experts and Teachers develop our daily lesson plans to the tune of 200 per week. This helps to standardize delivery. Lesson plans made by teachers are checked by School head and Mentors.

Class V

English Set 14

Lesson Plan 61

Aim for the week: Story reading and comprehension, vocabulary building, language construction, team-work

Unit: "Wonderful Waste", page 10, Marigold Book 5

Learning objectives: Children:

1. Read and comprehend the first 4 paragraphs of the story through class discussion
2. Through class discussion, know the meanings and applications of the words 'survey', 'scrap', 'waste'
3. Write answers to the first two questions from the 'Reading fun' section
4. Practice language construction by solving exercise 2, page 13

Preparatory work: Read story 'Wonderful Waste'. Check dictionary and decide how you will explain the words in advance, have the answers ready for Learning objectives 3 and 4

Sl. No.	Time (min)	Materials	Content	Activity						
30		Marigold (text)/pp-10-15.	1. Reading of first 4 paragraphs (upto ...an idea flashed across her mind) 2. discussion of meanings of 'scrap', 'survey', 'waste', 'sternly' 'flashed.' 3. Discussion and writing of the answers of the first 2 questions from the reading fun	<table border="1"> <thead> <tr> <th>Teacher</th> <th>Children</th> </tr> </thead> <tbody> <tr> <td>1. Discuss holiday festival - what children did. Focus on the topic of what all they ate, the recipes and ingredients of these items and then go on to say that to day the class will be starting to read a story on food.</td> <td>Discuss, read, build vocabulary, write answers to first two questions in the copy</td> </tr> <tr> <td>2. Give children time to read (DS), followed by AA, followed by NS who repeats and re-reads what others have read)</td> <td></td> </tr> </tbody> </table>	Teacher	Children	1. Discuss holiday festival - what children did. Focus on the topic of what all they ate, the recipes and ingredients of these items and then go on to say that to day the class will be starting to read a story on food.	Discuss, read, build vocabulary, write answers to first two questions in the copy	2. Give children time to read (DS), followed by AA, followed by NS who repeats and re-reads what others have read)	
Teacher	Children									
1. Discuss holiday festival - what children did. Focus on the topic of what all they ate, the recipes and ingredients of these items and then go on to say that to day the class will be starting to read a story on food.	Discuss, read, build vocabulary, write answers to first two questions in the copy									
2. Give children time to read (DS), followed by AA, followed by NS who repeats and re-reads what others have read)										



THEME BASED ASSEMBLY

Children prepare theme-based assembly everyday guided by teachers

CIRCLE TIME

This world renowned method of teacher-student bonding takes place in each class at the start of day. Teacher and students exchange news, happenings, pre-lesson activities as equal participants.



DISPLAYS

Subject-wise display walls in classrooms which change regularly. Children are able to observe those and learn and revise their lessons.



ACTIVITY BASED TEACHING

- Yellow day
- Trip to a farm market
- Non fire cooking
- Storytelling
- Dramatization
- Reading aloud session
- In-school projects

MAIN CAMPUS



Our main campus is located in Hingalganj, an island at the heart of the Sundarbans, covering 52,272 square feet. Currently offering classes up to Grade VIII, we are in the process of obtaining CBSE affiliation for education up to Class VII.



The campus includes classrooms from Nursery to Class V with modern facilities like a Science Lab, Teachers' Room, and Computer Lab. For Classes VI to VIII, temporary haystack structures are used. The school accommodates more than 350 students and emphasizes holistic development, featuring an outdoor games area, a kitchen garden, and various learning opportunities. The lush green campus hosts over 700 trees and 300 fruit plants.

377
Students

15,554
Classes

224
Working Days

80%
Attendance

 Jora Bottola, South Bottola, Hingalganj, North 24 Parganas, 743435

BENA BRANCH (5 FEB, 2021)



Bena village is located in Baduria subdivision of North Twenty Four Parganas district in West Bengal, India. The economic activity here is primarily working in brick-kilns and beedi rolling. In the aftermath of Cyclone Amphan in May 2020, the several villages of Sundarbans, including Bena were severely impacted – property, livelihood and lives were destroyed. SWS supported the community in multiple ways during this crisis by ration kits, community kitchen etc. Sensing compelling need to support the children of this village to continue their education journey, Bena Branch was established.



Despite challenges, the center thrived, with over 100 students excelling from Nursery to class IV. Students like Shahid Hasan and Alamin, who once struggled, now excel in mathematics. Irregular attendance has turned into a regular pattern, marking a shift in priorities. The initial struggles have transformed into a success story of education in challenging circumstances.

135
Students

8778
Classes

224
Working Days

72%
Attendance

📍 Bena (Sabur Mor), Patli Khanpur, Hasnabad, North 24 Parganas, 743426

GANESH MONDAL BRANCH (7TH MARCH, 2021)



Ganesh Mondol in Pashchim Khejurberia, located 25 kms from Hingalganj, was another village severely impacted by Cyclone Amphan in May 2020. Education of many children disrupted as homes and schools damaged. Rising to the occasion, lending a hand to help children once again start their journey in earnest, SWS opened an Early Education Center here in 7th March, 2021.

The journey began with first-generation learners unfamiliar with English and the CBSE curriculum, presenting unique challenges. Despite limited parental education, Swapnopuron invested in holistic development, including a library for backward students in Paschim Khejurberia and neighboring areas. Well-furnished classrooms and computer classes enhanced the learning environment. Against all odds, the Paschim Khejurberia branch now educates over 91 students from nursery to Class III, standing as a testament to triumph over adversity. Swapnopuron Shiksha Niketan in Paschim Khejurberia offers quality education, brightening the future for the community.



78

Students

8778

Classes

224

Working Days

77%

Attendance

 **West Khajurberia, Hasanabad, North Twenty Four Parganas, 743435**

KALITALA BRANCH (07TH MAY, 2021)



In the heart of Sundarbans, Swapnopuron Shiksha Niketan, Kalitala branch, faces challenges in the core forest, aiming to bring light in uncertainty. Amid annual cyclones, floods, and wildlife threats, it stands resilient as the first eco-school in Sundarbans, just 2 km from the perilous core forest and Indo-Bangladesh border.



Students, facing first-generation challenges from families of daily laborers and bidi binders, now embrace learning. Despite uncertainties, regular attendance has increased, and dropouts have decreased. Parents are adapting to the English medium curriculum, marking a transformative shift. With nearly 90 students from nursery to Class III, Swapnopuron Shiksha Niketan, Kalitala, symbolizes triumph over adversity, aspiring to carve their place through holistic and quality education.

90
Students

8778
Classes

224
Working Days

74%
Attendance

📍 East Kalitala Keripara, Hemnagar Coastal, North Twenty Four Parganas, 743439

CHOTO SAHEBKHALI BRANCH (7 NOV, 2020)



Choto Sahebkhali, located on the river border with Bangladesh, faced isolation and lacked early education infrastructure. Dependent on farming, the community grappled with predictability issues and market access challenges. Enrolling 78 first-generation learners from nursery to Class III, Choto Sahebkhali embraced Swapnopuron's holistic education curriculum.



The aim was to empower these students for success in today's world and address agricultural challenges. Swapnopuron became a beacon of hope, providing academic guidance and fostering resilience within the community.

78
Students

8516
Classes

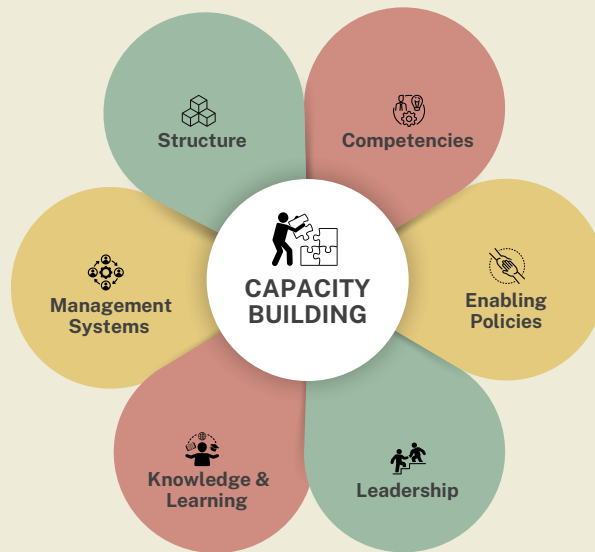
224
Working Days

70%
Attendance

📍 Chhoto Sahebkhali, Dulduli Panchayat, Hingaljanj, North 24 Parganas, 743439

CAPACITY BUILDING

Capacity Building in teachers essential to achieving the quality of education and academic experience of our beneficiaries. It is about strengthening the skills, resources, and abilities of teachers.



Annual Retreat

From January 3rd to January 5th, 2023, a workshop was held at Antaranga, Shantiniketan, West Bengal. The workshop was organized by Sucharita Seal, Arna Seal. A total of 30 teachers participated in the workshop, with 25 teachers from Swapnopuron and 5 from Antaranga.

Topics:

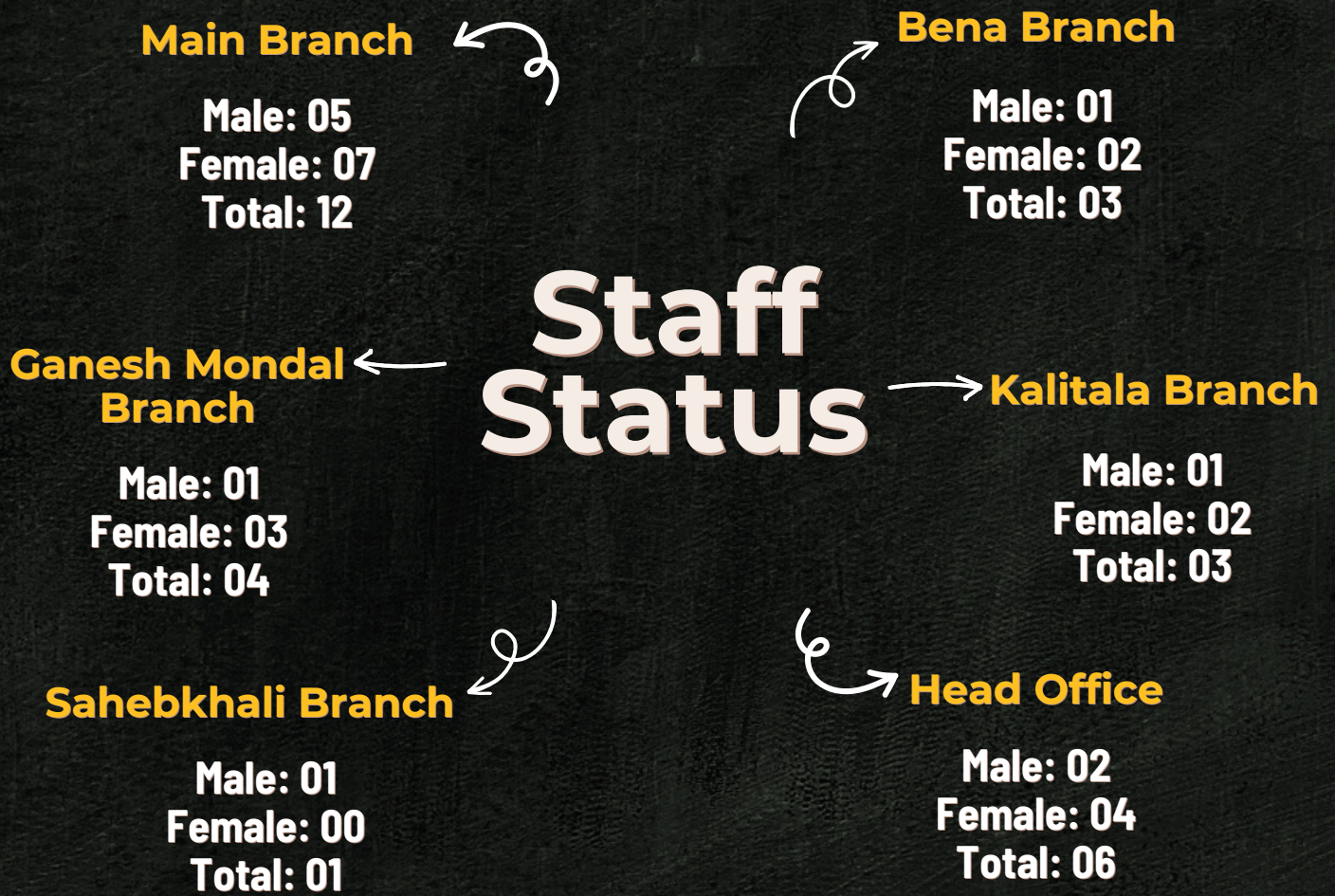
Lesson Plans	Teaching-Learning Materials
Time Management	Classroom Productivity
Notebooks Correction	Question Paper Design

Experiential Learning Program

Senior Assistant Teachers Bikash Biswas and Toukir Sardar attended a workshop on attention-grabbing techniques, hook activities, classroom management, and observation practices in collaboration with Disha India in Delhi.

Digital Literacy Workshop

The Media & Communication personnel attended the Democracy Digital for Filmmaking workshop organized by the Azim Premji Foundation in Dehradun. The workshop, which lasted for ten days in April 2023, aimed to equip participants with basic skills in filmmaking and storytelling.



Total Strength

Male: 11
Female: 18
Total: 29



VOLUNTEERS & INTERN

SWS has attracted the attention of experts in diverse relevant fields. Going beyond the call of duty, SWS is in deep gratitude to these exceptional, generous people who have invested time and energy for the benefit of SWS students, teachers, people in the community as a social responsibility.



- **Inspirational Workshops:** Shromona Dey's impactful sessions, stemming from her role as an Intern School Psychologist, have left an indelible mark. Group and individual interactions, **adolescent sessions, and workshops on Parental Counseling** have addressed not only academic concerns but also the emotional and psychological well-being of our students.
- **Diverse Internship Programs:** Interns from institutions like TISS Mumbai has brought a unique blend of theoretical insights and practical experiences. From education programs to impact assessments, these internships have fueled continuous improvement in our **teaching methodologies**.
- **Storytelling Magic:** Priyanka Chatterjee's **storytelling sessions** have transcended traditional teaching methods. Through the art of storytelling, she has ignited the imaginative spark in our students, fostering a love for narratives and creativity.
- **Scientific Enrichment:** A one-day workshop by a senior scientist from the Botanical Garden on **World Ozone Day** has elevated the scientific curiosity of our students. These experiences go beyond textbooks, instilling a sense of wonder and curiosity about the natural world.
- **Early Marriage & Teen Motherhood:** London School of Business investigated the issue of **Early marriage and Teenage motherhood** and provided relevant solutions which reflected on the change maker's activities.



- Conducted a 25 series of Facebook Live sessions throughout 2022-23.
- Emphasis on mental health and child protection topics.
- Explored geriatric mental health, ADHD in children, and fostering creativity in early childhood.
- The sessions led by experts in their respective fields.

FACEBOOK LIVE SERIES

- Addressed issues of social media's influence on education, tendencies of suicide in children, and the importance of life skills in the education sector.
- In-depth discussions on topics such as identifying and managing ASD children.



EXPOSURE AND EDUCATIONAL VISITS



KOLKATA LITERARY FEST

On the 25th of January 2023, four students from our main school attended various education-related sessions at Victoria Memorial Hall in association with Tata Steel.



TATA STEEL RUN

On December 16, 2022, Swapnapuron, in collaboration with SVP partners, participated in the Tata Steel Run. Total of 111 participants, consisting of students and teachers from the Sundarbans, as well as 59 guests and members of SVP, all united in their support for the cause of addressing climate change and preserving ecology.



GOLPO MELA AT INDIAN MUSEUM

On the 28th of January 2023, 25 students from SWS attended a storytelling and story writing session in association with the Bondhu Group at Kolkata Indian Museum.



SAG-KP program



Child Protection & Awareness

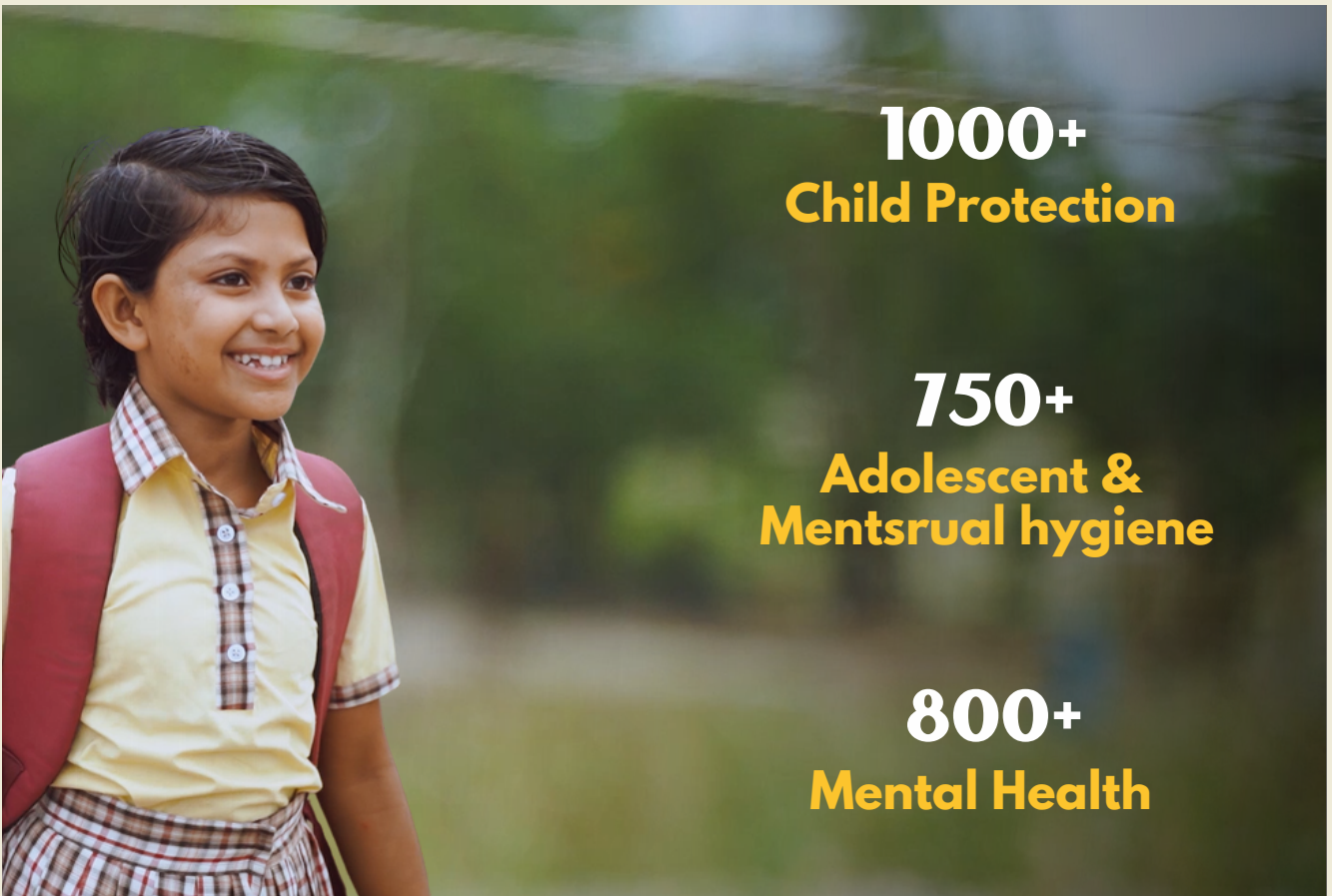


Regular Counselling Program



Rubella Vaccination

CHILD PROTECTION & ADOLESCENT HEALTH



1000+
Child Protection

750+
Adolescent & Mentsrual hygiene

800+
Mental Health



SAG-KP Program: SAG-KP Convergence Program was launched with the aim to overall empowerment of adolescent girls of 11 to 18 years (school going and out of school). It's enable the adolescent girls for self development and empowerment. Improve their nutrition and health status.

Topics:

- | | |
|----------------------|------------------------|
| Self-esteem | Woman Empowerment |
| Early Child Marriage | Benefits of Education |
| POCSO act | Mood Swings |
| Anger Management | Menstruation Awareness |

Sessions :

- On 8th March 2023, Shabari Sarkar, the school counselor at SWS School in Leninagar, conducted sessions at the Young Star Club under the Garuli Urban ICDS project. The sessions included 24 girls ranging from class V to XII.
- On January 13th, 2023, a session was held at Kachhrapara, North 24Parganas, with 50 girls aged 11-18, spanning from class V to college students.

- On 28th May 2023, Shabari Sarkar, the school counselor at SWS School in Kanchrapara, conducted sessions attended by 50 adolescent girls. Sanitary napkins were distributed to all the participants.

Child Protection & Awareness: 14

students of the Psychology Department of the Gayatri Chetna Foundation in collaboration with SWS, under observation of two faculty conducted a session in two govt school & with local coaching centers covering 650 girl child in Hingalganj, North 24 parganas on 16th & 17th November 2022.

Regular counselling Program: Shabari Sarkar, school counselor, conducts sessions in regular interval with the children & parents including individual and group sessions in main school & other branches that helps to navigate life's challenges more effectively and thrive academically, socially, and emotionally.

Rubella Vaccination: 200 students from nursery to class I in the main school at Hingalganj were vaccinated on Jan 14th, 2023.



Fish Farming Training



Kitchen Garden Training



Beautician Training

SKILL BUILDING & WOMEN EMPOWERMENT

100+

**Skill
Training**

300+

**Farming
Training**

50+

Families



Skill Training Program

- On 17th & 21st September 2022, over 100 women were trained covering candle making, soap making, papad making production in collaboration with Sundari Organics. 12 women turning these skills into a profession.
 - Scientist from Botanical Garden Bangalore offered kitchen garden training to 50 families & the outcome was exhibited at Soul to Soil exhibition.
 - JSS in collaboration with Skill India provided professional beautician training to 50 young women in the community with valuable skills in the beauty industry.
 - In collaboration with Aqua Doctor Solution comprehensive fish farming training and support initiatives were implemented, benefitting over 300 local families in Sahebkhali and Sanderbill.
- A Three-day Training Program on Fish Value Addition, By-Products, Retail Marketing, and EDP Avenues. It was a collaboration between the Department of Fish Processing Technology and Neotia University. The participation was over 90 women in the workshop.





ENVIRONMENT

50,000 MANGROVE PLANTED

A significant environmental initiative saw the planting of 50,000 mangrove saplings, with plans to reach 100,000 saplings. This community-driven effort reflects a commitment to environmental conservation and ecosystem restoration.

2,50,000 VETIVER SAPLINGS

The Sri Sri Institute of Agricultural Sciences and Technology Trust has played a pivotal role in supporting the plantation of 2,50,000 vetiver saplings. This large-scale initiative contributes to soil conservation and sustainable agricultural practices.

STORIES OF CHANGE



SUMANA KHATUN

“Ami nije toh konodino porashuno korte parlam na, amar khub eccha j ami amar natni der bhalo kore porabo jai e hok r chai j ora chakri koruk” (I have never got the opportunity to study, but I will help my granddaughters study at any cost and I want them to get a job as well.)

Sumana's grandmother, hailing from poverty and denied an education, now works at a school, ardently desiring a better life for her granddaughter. Despite early marriage challenges, she's determined to build a brighter future. Sumana, excelling academically, credits Swopnopuron school for her transformation. The school not only nurtured her studies but became a lifeline during cyclone Aila, providing sustenance and care. Sumana's proficiency in English and love for learning bring immense pride to her grandmother, who envisions a future of respect and societal value for Sumana —something they never dared to dream. Grateful for Swopnopuron, the grandmother smiles with hope, amazed at the remarkable change it brought to their impoverished village.



AKASH SARDAR

“Bhaat toh geleo peye jabo kintu porashuno korar sujog sikkha sob somoy payoa jai na eikhane” Akash, navigating financial challenges in the absence of his parents, finds solace in Swopnopuron, a beacon of hope for a brighter future.

Despite lacking foundational knowledge, the school transforms him into an adept student in English, Mathematics, and Bengali. Fueled by a determination to escape poverty, Akash aspires to be a government officer, dedicating himself to academic excellence. His aunt, who missed educational opportunities, hopes for Akash's success. Swopnopuron stands as a catalyst for change, symbolizing the transformative power of quality education, promising a brighter future for Akash and others

STORIES OF CHANGE



SAMSUR NAHAR

Nestled in the Dakhin Barmnhat, P.O - Barmnhat, P.S - Hosnabad, Samsur Nahar's household echoed the strains of financial struggle with her son, husband, father-in-law and mother-in-law. Living in the heart of the neighbourhood, her family's precarious financial condition stirred a fierce determination within her.

”
Motivated by the promise of a brighter future, she eagerly enrolled in the "Artisan Empowerment Initiative" at Swapnopuron Shiksha Niketan, committing herself to four months of intensive training. Through the program, Salsul discovered a newfound passion for tailoring, papermaking, and crafting, transforming her uncertainties into boundless opportunities. Today, she stands as a testament to the transformative power of education and skill development, igniting hope within her community.



SONDHYA PAL

Amidst the bustling alleys of Babughat, Sughandha Pal's home bore the weight of financial adversity. Residing in the heart of the neighbourhood, her family's struggles fueled a fiery determination within her. Drawn by the promise of a brighter tomorrow,

”
she enrolled in the training program at Swapnopuron Shiksha Niketan focusing on preparing paper bags and dedicating herself to mastering the art of tailoring and handicrafts. Through the program's guidance, Sughandha discovered her innate talents, weaving together dreams of prosperity and self-sufficiency. Today, she stands as a beacon of hope, a living testament to the transformative power of education and opportunity.

AWARDS & RECOGNITION

MENTOR AWARD - BIKASH BISWAS (SEP-2022)

Our Faculty member Mr. Bikash Biswas won a mentor award in the Kolkata Heros - Teachers Day Award



CAFÉ PEHCHAAN (AUG-2022)

Pehchaan, an event organized by CAFÉ, in association with the Council for Fair Business Practices (CFBP) to highlight the importance of identity, recognised several women achievers in diverse fields for their contribution. Ms. Satarupa Majumdar was conferred the Change Maker Award for making exceptional differences in education and social development



SISTER NIVEDITA UNIVERSITY (MAR-2022)

SWS was felicitated for the extensive work undertaken in the arena of education in Sundarbans.



ROTARY (JUN-2022)

SWS was recognised for its role in Women Empowerment by providing skill training to women of Sunderbans & Water and Sanitation



LIONS CLUB (JULY-2022)

SWS was felicitated for the extensive work undertaken in the arena of education in Sundarbans



ROTARY INNER WHEEL (JUNE-2022)

Founder Satarupa Majumdar was felicitated for the sterling work done by SWS in the Sundarbans during 2021-2022 in the field of Womens Empowerment

MEDIA COVERAGE

স্কুলে স্টেম ল্যাবরেটরি

নিজস্ব সংবাদদাতা
হিন্দলগঞ্জ

উত্তর ২৪ পরগনার হিন্দলগঞ্জের জোড়া বটতলার একটি বেসরকারি স্কুলে পঞ্চম থেকে দশম শ্রেণির পড়ুয়াদের বিজ্ঞান, অঙ্ক ও ভূগোল

সহজ ভাবে বোঝার জন্য চালু হল 'স্টেম ল্যাব'। স্কুল সূত্রে জানা গিয়েছে, প্রায় সাড়ে ৭ লক্ষ টাকা ব্যয়ে ওই ল্যাবরেটরি তৈরি করা হয়েছে।

স্কুল চলাকালীন আশপাশের বিভিন্ন সরকারি স্কুলের বিজ্ঞান শাখার পড়ুয়া বা পঞ্চম থেকে দ্বাদশ শ্রেণির

কোনও পড়ুয়া ওই পরীক্ষাগারে এসে অঙ্ক, ভূগোল ও বিজ্ঞানের বিভিন্ন জটিল বিষয় সহজ ভাবে শিখতে পারবে। সাহায্য করবেন স্কুলের শিক্ষকেরা। বিজ্ঞানের ৮০টি মডেল রয়েছে ল্যাবে।

স্কুলের তরফে শতরূপা মজুমদার জানান, "প্রথম বার সুন্দরবনের কোনও স্কুলে এমন ল্যাব তৈরি হল। আমরা চাই, এই স্কুলের পড়ুয়া ছাড়াও এলাকার অন্য স্কুলের ছাত্রছাত্রীরা এই ল্যাব ব্যবহার করুক।"

22nd Jan, 2022



Dreams to Fulfil

Swapnopuram Shiksha Niketan (SSN) is the sole English-medium school located near the unique geographic region of the Sundarbans. The area is the world's largest deltaic zone and is designated a UNESCO World Heritage Site. Its biosphere is replete with an abundance of mangrove and animal species, including the Bengal Tiger. This geographically fragile biosphere is very vulnerable to mounting climate change.

SSN's mission to students from the community is to encourage them into becoming stewards for the environment, to reduce the impacts of climate change, which are only getting worse with every passing day. For instance, statistics confirm that now cyclones strike with greater speed and frequency. It is no wonder the Sundarbans has been given the unfortunate moniker of 'The Cyclone Capital' of the country.

The students at SSN are first-generation learners—children of marginalised communities with limited conventional opportunities for education.

According to Down to Earth magazine, "These children live in a settlement extremely close to the world's largest mangrove forest often ravaged by cyclones. But most of them had limited understanding of how climate change is linked to these extreme weather events or other environmental problems." It is SSN's aim to narrow this gap in awareness.

Locals refer to SSN's verdant 12-acre campus as an 'Eco Hub', because it teaches students integrated farming in conjunction to the regular school curriculum. They are taught to tend kitchen gardens, cultivate fish and breed fowl. As a result, the community is able to secure vegetables, fish and eggs for its members. Surplus produce is sold at local markets with the proceeds going into the school's coffers.

In 2020, a major cyclonic storm razed many buildings to the ground, while accompanying tidal waves completely inundated the land. Swapnopuram is constructing a new school in Kalitaka using Earthbag construction to withstand any future cyclones. This architectural method reinforces structures against strong winds and protects them during flooding. Reinforced Cement Concrete is replaced with natural materials such as earth, lime, wood and bamboo. Bags packed with soil are stacked like masonry and tamped down flat. Barbed wire between the layers of bags reinforces them further.

These buildings are durable, non-toxic and simple to construct, they are also earthquake and flood resilient. Best of all, the architecture doesn't stick out like a sore thumb but blends in with the landscape.

22nd April, 2022

EDUCATION

English-medium school for Sunderbans village

Move to bridge learning gap in kids

JINNA PACTOPUR | PUBLISHED 9:28:22, 07-01-2022



Students at Ullita, the primary school in Paschim Khejuria in the Sunderbans

11th May, 2022

পড়ুয়াদের বইমুখী করতে চালু হল গ্রন্থাগার

নিজস্ব সংবাদদাতা

হেমনগর

শিক্ষাবিবেশে গ্রন্থাগার উদ্বোধন হল গ্রামের দরিদ্র পড়ুয়াদের কথা ভেবে।

হেমনগর গ্রামের যোগেশপাড়া পঞ্চায়েতের পাটখারা গ্রামে একটি সংগঠনের তরফে গ্রন্থাগার চালু হয়েছে। সংগঠনের তরফে বিকাশ বিকাশ জানান, গ্রামের দরিদ্র পরিবারের পড়ুয়ারা প্রয়োজনীয় বিভিন্ন দামী বই কিনতে না পেরে পড়াশোনায়ে পিছিয়ে পড়ে। সেই সমস্যার সমাধানের জন্য এই গ্রন্থাগার করা হল। আগাতত স্কুল পড়ুয়াদের জন্য প্রায় ৫০০ বই রয়েছে। ক্রমে গ্রন্থাগার থেকে বিশ্ববিদ্যালয়স্তরের পর্যন্ত বিভিন্ন ক্লাসের পড়ুয়াদের জন্য



মনোযোগ: পাঠ্যপুস্তকে পড়ুয়ারা। ছবি: নবেন্দু ঘোষ

বিভিন্ন বিষয়ের বই এখানে পাওয়া যাবে। সেই সঙ্গে জাস্টেট এন্ট্রান্স এবং বিজ্ঞান শাখার পড়ুয়াদের জন্যও বই থাকবে। পড়ুয়ারা মাসে মাত্র ২০ টাকা দিয়ে গ্রন্থাগারের কার্ড করতে পারবে। ব্যক্তিতে বই নিয়ে যেতে পারবে।

গ্রন্থাগারে বসেও পড়তে পারবে। প্রথম দিনই প্রায় ১০০ জন বিভিন্ন ক্লাসের পড়ুয়া কার্ড করতে আসে। তাদের এক জন সুদীপা রায়। স্থানীয় যোগেশপাড়া হাইস্কুলে নবম শ্রেণিতে পড়ে সে। সুদীপ বলে, "পাৰা নেই। মা সাফাইকর্মীর কাজ

করে অনেক কষ্টে আমাকে পড়ান। প্রয়োজনীয় বিভিন্ন বই কিনতে পারি না। গ্রন্থাগার থেকে বই পাব জেনে আজই চলে এলাম।"

সংগঠনের তরফে বিকাশ বিকাশ বলেন, "মেঝাইল থেকে মোখ সরিয়ে বর্তমান যুগসমাজকে বইমুখী করাটা খুব দরকার। তাই এই উদ্যোগ। এর ফলে অনেক দরিদ্র মেঝাই পড়ুয়ার উপকার হবে বলে আশাবাদী আমরা।"

বিকাশ আরও জানান, নবেন্দু মাসেই হিন্দলগঞ্জ ক্লাবের আরও দুটি গ্রামে এমন গ্রন্থাগার গড়ে তোলা হবে। এ ছাড়া, পরিকল্পনা আছে, আগামী কয়েক মাসের মধ্যে হিন্দলগঞ্জ ও হাসনাবাদ ক্লাবের বিভিন্ন গ্রামে প্রায় ২৫টি গ্রন্থাগার করা হবে।

15th Nov, 2022

সুন্দরবনের প্রত্যন্ত অঞ্চলের স্কুলের ছাত্রদের নিয়ে বোটানিক্যাল সার্ভে অফ ইন্ডিয়া দ্বারা বিশ্ব ওজোন দিবস উদযাপন

By shubhabor12
NEWS
SEP 18, 2022
#Kolkata, #News, #people, #Public



ওজোন ডে পালিত হল

আজকালের প্রতিবেদন

বটানিক্যাল সার্ভে অফ ইন্ডিয়া, সেন্ট্রাল ন্যাশনাল হারবারিয়াম, রিএসআই—এনভিস রিসোর্স পার্টনার অন বায়োডাইভার্সিটি, হাওড়া এবং হিন্দলগঞ্জের স্বল্পপুত্র শিক্ষানিকেতনের যৌথ উদ্যোগে পালিত হল ওজোন ডে-২০২২। বটানিক্যাল সার্ভে অফ ইন্ডিয়ার একটি দল রাজ্যের প্রত্যন্ত ঞ্চে থাকা কয়েকটি স্কুলে যায় এবং সেত গুজেন সেত লাইভ আওয়ারকেনে র্যালির আয়োজন করে। হিন্দলগঞ্জের বিভিন্ন ঞ্চে এই র্যালি হয়।

বটানিক্যাল সার্ভে অফ ইন্ডিয়ার টেকনিক্যাল সেকশন ইনচার্জ ড. এস এস দাস চার্জর্যালি ওজোন ডে-র উদ্বোধন করেন। পড়ুয়াদের ওজোন স্তর রক্ষা করার বিষয়ে তথ্য জানানো হয়। এখানে অংশ নিয়েছিলেন স্বল্পপুত্র শিক্ষানিকেতনের জাইস থিপিপাল সোমা বসু। একটি কুইজ প্রতিযোগিতার আয়োজন করা হয়। ছিলেন সেন্ট্রাল ন্যাশনাল হারবারিয়ামের বটানিষ্ট ড. মহুয়া পাল। সুজয় সরকার, জ্যোতির্ময় পাল—সহ বিশিষ্ট ব্যক্তিত্ব উপস্থিত ছিলেন।

17th Sep, 2022



FUNDRAISING 2022 - 23

SWS acknowledges the support and contributions from its well-wishers who have made it possible to sustain and grow our activities.

CSR

₹ 88,89,000

55%

Individual

₹ 60,16,715

37.25%

Institution

₹ 12,44,800

7.70%

Total: 1,61,50,515

OUR SUPPORTERS



KEY NGO PARTNERS



AUDITOR'S REPORT

To
The Executive Committee
Katakhali Swapnopuron Welfare Society
G-137A, Baghajatin Road Kolkata 700086

We have audited the attached Balance Sheet of **Katakhali Swapnopuron Welfare Society** as at 31st March, 2023 along with the Income & Expenditure Account for the year ended on that date annexed thereto. The financial statements are the responsibility of the management. Our responsibility is to express an opinion on these financial statements based on our audit.

We conducted our audit in accordance with the auditing standard generally accepted in India. Those standards are free of material misstatements and disclosure.

An audit also includes assessing the accounting principle used and significant estimates made by the management as well as evaluating the overall Financial Statement presentation.

We believe that our audit provides a reasonable basis for our opinion we further report that;

- a. We have obtained all the information and explanation, which to the best of our knowledge and belief were necessary for the purpose of the audit.
- b. In our opinion proper books of accounts have been kept so far as appear from the examination of the books.
- c. The Balance Sheet and Income & Expenditure account are in agreement with the books of account;
- d. In our opinion and to the best of our information and according to the explanation given to us, the said Balance Sheet and the Income & Expenditure Account give a true and fair view :-
 - i) In case of the Balance Sheet of the state of affairs as at 31st March, 2023 and
 - ii) In case of Income & Expenditure Account of the surplus for the year ended on that date.

For M/s Choudhary Sharma & Associates
Chartered Accountants
Firm Reg.No.318065E

M.M. Agrawal
(M.M.Agrawal)
M.No.054377
Partner



UDIN : 23054377BGVYUA5979

Place : Kolkata

Date: The 27th day of October,2023

KATAKHALI SWAPNOPURON WELFARE SOCIETY

G-137A BAGHAJATIN ROAD, KOLKATA 700086

BALANCE SHEET

AS AT 31ST MARCH, 2023

LIABILITIES	SCH	YR ENDED 31.03.2023 (INR)	YR ENDED 31.03.2022 (INR)	ASSETS	SCH	YR ENDED 31.03.2023 (INR)	YR ENDED 31.03.2022 (INR)
FUND ACCOUNT		21,491,943	15,176,688	FIXED ASSETS			
CORPUS FUND	01	17,048,081	10,745,033			16,450,226	2,537,893
CAPITAL FUND	02	4,443,862	4,431,655	CAPITAL WORK-IN-PROGRESS (BUILDING)	03	4,681,969	10,742,673
				LOANS & ADVANCES		101,250	317,659
CURRENT LIABILITIES		1,718,199	1,217,775	CASH & BANK BALANCES	04	1,976,697	2,796,238
SUNDRY CREDITORS		871,566	843,633				
OTHER CURRENT LIABILITIES		846,633	374,142				
						23,210,142	16,394,463

For Katakhalī Swapnopuron Welfare Society

Biswipit Saha
Treasurer

Satamya Majumder
Secretary



for Choudhary Sharma & Associates
Chartered Accountants

F.R.NO.318065E

K. M. Aggarwal

M.M.AGRAWAL
PARTNER

MEMBERSHIP NO. 054377

DATE: THE 27TH DAY OF OCTOBER, 2023

PLACE: KOLKATA

KATAKHALI SWAPNOPURON WELFARE SOCIETY

G-137A BAGHAJATIN ROAD, KOLKATA 700086

INCOME AND EXPENDITURE ACCOUNT FOR THE YEAR ENDED 31ST MARCH 2023

EXPENDITURE	SCH	YR ENDED 31.03.2023 (INR)	YR ENDED 31.03.2022 (INR)	INCOME	SCH	YR ENDED 31.03.2023 (INR)	YR ENDED 31.03.2022 (INR)
ADMINISTRATIVE EXPENSES	05	1,662,271	2,610,815	ADMISSION, TUITION AND OTHER FEES		2,123,721	665,175
EDUCATIONAL PROGRAM	06	10,958,991	6,506,267	DONATIONS RECEIVED - IN KIND		-	4,549,166
RELIEF TO POOR PROGRAM	07	250,690	4,481,530	DONATIONS RECEIVED - OTHERS		12,086,813	12,206,004
LAND LEASE RENT		75,000	143,000	COLLECTION FROM SOCIAL WELFARE PROGRAM		301,165	-
FUND RAISING ACTIVITIES		1,586,727	954,867	BANK INTEREST		32,696	23,454
				OTHER INCOME		1,491	-
EXPENDITURE BEFORE CAPITAL APPROPRIATIONS		<u>14,533,679</u>	<u>14,696,479</u>				
SURPLUS-BEFORE CAPITAL APPROPRIATIONS C/D		<u>12,207</u>	<u>2,747,320</u>				
		<u>14,545,886</u>	<u>17,443,799</u>			<u>14,545,886</u>	<u>17,443,799</u>
				SURPLUS-BEFORE CAPITAL APPROPRIATIONS B/D		<u>12,207</u>	<u>2,747,320</u>
						<u>12,207</u>	<u>2,747,320</u>

For Katakhalī Swapnopuron Welfare Society

Biswajit Saha
Treasurer

Satanya Majumder
Secretary

for Choudhary Sharma & Associates
Chartered Accountants
F.R.NO 318065E

M. M. Agrawal

M.M.AGRAWAL
PARTNER
MEMBERSHIP NO. 054377



DATE: THE 27TH DAY OF OCTOBER, 2023

PLACE: KOLKATA

KATAKHALI SWAPNOPURON WELFARE SOCIETY

SCHEDULES

	YR ENDED 31.03.2023 (INR)	YR ENDED 31.03.2022 (INR)
<i>SCHEDULE 01: CORPUS FUND</i>		
OPENING BALANCE	10,745,033	7,264,551
ADD: RECEIPT DURING THE YEAR	6,303,048	3,480,482
	<u>17,048,081</u>	<u>10,745,033</u>
<i>SCHEDULE 02: CAPITAL FUND</i>		
OPENING BALANCE	4,431,655	1,684,335
ADD: SURPLUS/(DEFICIT) FOR THE YEAR	12,207	2,747,320
	<u>4,443,862</u>	<u>4,431,655</u>
LESS: TRANSFER TO CORPUS FUND	-	-
	<u>4,443,862</u>	<u>4,431,655</u>
<i>SCHEDULE 04: CASH AND BANK BALANCES</i>		
CASH AT BANK	1,865,911	2,739,651
CASH-IN-HAND	110,786	56,587
	<u>1,976,697</u>	<u>2,796,238</u>
<i>SCHEDULE 05: ADMINISTRATIVE EXPENSES</i>		
OFFICE RENT	91,476	80,580
SCHOOL BUILDING RENT	51,000	-
PRINTING & STATIONERY	26,974	80,049
DEPRECIATION	357,279	452,648
PUBLICITY & PROMOTION	19,273	461,492
TRAVELLING & CONVEYANCE	66,800	566,046
AUDIT FEES	47,200	35,400
OTHER ADMINISTRATIVE EXPENSES	1,002,269	934,600
	<u>1,662,271</u>	<u>2,610,815</u>
<i>SCHEDULE 06: EDUCATIONAL PROGRAM</i>		
CAPACITY BUILDING EXPENSES	1,971,525	219,895
SCHOOL RUNNING EXPENSES	8,357,228	6,102,872
OTHER PROGRAM & PROJECT EXPENSES	630,238	183,500
	<u>10,958,991</u>	<u>6,506,267</u>
<i>SCHEDULE 07: RELIEF TO POOR PROGRAM</i>		
LIVELIHOOD PROJECT-HANDICRAFT	115,182	13,800
RELIEF/SOCIAL WELFARE EXPENSES	101,508	4,361,730
SAG KP (GOVT OF WEST BENGAL)	34,000	106,000
	<u>250,690</u>	<u>4,481,530</u>



Biswajit Saha

Satarupa Majumder

KATAKHALI SWAPNOPURON WELFARE SOCIETY

SCHEDULE-3

SCHEDULE 04: FIXED ASSETS

A.Y. 2023-24

DESCRIPTION OF ASSETS	DEPRECIATION % APPLIED	WRITTEN DOWN VALUE			DEPRECIATION FOR THE YEAR	NET BLOCK
		OPENING BALANCE	ADDITIONS FOR THE YEAR	CLOSING BALANCE		
BUILDING	-	974,219	13,662,727	14,636,946	-	14,636,946
COMPUTER (OLD)	40%	6,994	-	6,994	2,798	4,196
COMPUTER	40%	217,351	68,485	285,836	100,637	185,199
FURNITURE & FIXTURES (OLD)	10%	122,335	-	122,335	12,234	110,101
FURNITURE & FIXTURES	10%	466,251	88,400	554,651	51,714	502,937
REFRIGERATOR	15%	6,475	-	6,475	971	5,504
SEWING MACHINE	15%	69,638	-	69,638	10,446	59,192
XEROX MACHINE	15%	48,144	-	48,144	7,222	40,922
MEDICAL EQUIPMENT	15%	85,000	-	85,000	12,750	72,250
PLAY EQUIPMENTS	15%	156,700	-	156,700	23,505	133,195
WATER FILTRATION PLANT	15%	75,649	-	75,649	11,347	64,302
STEM LAB - MSC	-	-	450,000	450,000	-	450,000
BOOKS	40%	303,467	-	303,467	121,387	182,080
SOFTWARE	40%	5,670	-	5,670	2,268	3,402
		2,537,893	14,269,612	16,807,505	357,279	16,450,226

Ranjit Saha

Satya Majumdar



KATAKHALI SWAPNOPURON WELFARE SOCIETY

Schedule No. 8

A. Notes forming part of financial statements

1. Overview of Society

KATAKHALI SWAPNOPURON WELFARE SOCIETY is registered under West Bengal Societies Registration Act, 1961 in 2012 having Regn. No. S/IL/91212 OF 2012-2013 with main objective to promote Education, Relief of the poor and distressed, Medical Aid, Training for self-employment to poor women. Environment etc.

Its main objectives are as under:

- * to set up Primary Schools for promotion of education and cultural activities.
- * to arrange and organise lectures, debates, discussions, seminars and excursions for the diffusion of knowledge..
- * to support projects, meetings, promoting self-employment activities, capacity building, etc. to overcome economic problems.
- * to render relief to the sufferer in times of flood, drought, earthquake and other natural calamities irrespective of caste and creed.
- * to render medical assistance to the peoples under poverty level and to the peoples seriously in need of medical support.

2. Basis of preparation of financial statements

These statements have been prepared in accordance with the generally accepted accounting principles.

3. Recognition principles

- i. Receipts are primarily derived in the form of donations received from various donors which is recognized on receipt basis.
- iv. Income and Expenditure are accounted on an accrual basis.

4. Fixed assets

Fixed assets are stated at cost of acquisition including taxes, less accumulated depreddation. Cost of acquisition includes all expenses Incurred to bring the assets to their present location and working conditions up to the date the assets are put to use.

5. Depreciation and amortization

Depredation has been provided on Fixed Assets under Written Down Value method at the rates and in the manner prescribed under the Income Tax Act, 1961



B. Additional Information forming part of Notes to Accounts

1. The Corpus Fund includes fund for Fixed Assets in kind assigned by donor for such purpose.
2. Previous year figures have been regrouped /reclassified wherever considered necessary to suit the current year's layout.

For **Choudhary Sharma & Associates**

Chartered Accountants

Firm Regn.No.318065E

M.M. Agrawal

(M.M.Agrawal)

Partner

Membership No.054377

Place : Kolkata

Date : the 27th Day of October 2023



CHALLENGES



Completion of Main School Building, commencement of construction of Annexe Building and other Infrastructure including boundary wall need to be undertaken with priority. For qualifying for CBSE affiliation, SWS will need to satisfy all requirements relating to infrastructure and facilities including laboratories, library, playground area etc. We at SWS are committed to realize this objective.



The process of preparing and submitting an affiliation application to CBSE involves navigating complex administrative procedures and meeting stringent criteria. Ensuring that all necessary documentation is accurate, complete, and compliant with CBSE guidelines can be time-consuming and resource-intensive. CBSE affiliation processes often have strict timelines and deadlines, leaving little room for error or delays.



Ensuring compliance with fire safety regulations and standards can be challenging, especially considering the diverse requirements and regulations that may vary based on laws and building codes. Allocating a portion of the grant towards implementing fire safety measures may compete with other pressing needs and priorities within the organization's budget.



Constructing a boundary wall can be a significant expense, requiring careful budgeting and allocation of resources within the organization's financial constraints. Acquiring the necessary land for constructing the boundary wall may involve navigating legal complexities, including property rights, land ownership disputes, and regulatory approvals.



WAY FORWARD



Implementing school building construction efficiently, regularly monitor progress, and address any delays or obstacles promptly. Utilize skilled labor and quality materials to ensure durability and sustainability of infrastructure.



Develop a comprehensive plan outlining the steps involved in the affiliation process, including documentation requirements, timelines, and resource allocation. Allocate funds specifically for affiliation-related expenses, including fees, administrative costs, and any unforeseen expenditures that may arise during the process.



Conduct a thorough risk assessment of the school premises to identify potential fire hazards and vulnerabilities. This assessment should include structural elements, electrical systems, storage areas, and other potential sources of ignition. Develop and implement fire safety training programs for students, teachers, and staff. Train individuals on how to properly use fire extinguishers, evacuate the building safely, and respond effectively to fire emergencies.



Conduct a comprehensive feasibility study to assess the viability of constructing a boundary wall, considering factors such as cost, land availability, regulatory requirements, and community impact. Develop a detailed plan outlining the scope, timeline, and budget for the project. Ensure compliance with all relevant laws and regulations governing land acquisition and construction. Seek legal advice and obtain necessary permits and approvals from local authorities before proceeding with the project.



Introducing

KSWS EXECUTIVE COMMITTEE



Prabal Roy
Vice-President



Biswajit Saha
Treasurer



Prasenjit Sarkar
Executive Committee Member



Dr. Shibani Chakraborty
Executive Committee Member



Malati Majumdar
Executive Committee Member



Dr. Navanita Lahiri
Executive Committee Member



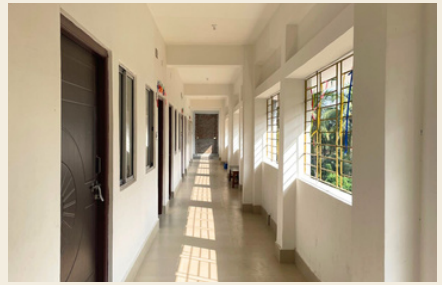
Bhargavi Maity
Executive Committee Member



Dr. Pratap Mukhopadhyay
Executive Committee Member



Swati Sarawgi
Executive Committee Member



WE NEED YOUR SUPPORT
 To secure CBSE affiliation and ensure a seamless educational journey for our students, we need to complete the 2nd floor of our school building according to CBSE requirements.



PROGRESS STATUS FUND UTILIZATION

EXPECTATION

- First floor completion of the main school building.

- Second floor Completion (1810 sq ft) - 28 lakhs
- Extension of Ground floor (1810 sq ft) - 28 lakhs
- Extension building first floor (1810 sq ft) - 24 lakhs
- Boundary wall (1262 sq ft) - 24 lakhs
- Teacher's quarters accommodating six teachers (756 sq ft) - 10 lakhs

3\4" down stonechips	85.0 m ³ @ Rs 3200/- per m ³	Rs. 2,72,000.00
Med. Course Sand	56.0 m ³ @ Rs 2300/- per m ³	Rs. 1,28,800.00
Cement	705 Bags @ Rs 400/- per bag	Rs. 2,82,000.00
Reinforcement steel of different diagonal	10.40 M.T @ Rs. 80/- per kg	Rs. 8,32,000.00
Electrical Concealed pipeline on roof	333.0 m ² @ Rs. 216/- per m ²	Rs.71,928.00
Labour charges	333.0m ² @ Rs. 1614 per m ²	Rs. 5,37,462.00
Overhead & Supervision		Rs. 2,12,419.00
Total - Rs. 23,36,609.00		

Your Help Is Very Meaningful

We extend an invitation for you to become a valued contributor to the advancement and enrichment of the Swapnopuron Shiksha Niketan Schools.

OPEX

Particular	Funding Required	Offerings
Education Sponsorship	12,000/per child	Year-long free education with essential educational materials
Education Kit	5000/per child	Home learning aid for primary & pre- primary students to equip parents to engage with their children's studies
School Uniform	900/per child	2 sets of school Uniform
School Bag & Book	1150/per child	Academic books for the year & one school bag
Co-curricular activity	400/per child	Annual sports & other events activity for year
Teacher Remuneration	1.8 Lakh /per teacher	Teacher remuneration for year
Library Book	1 lakh	Story books, general knowledge books for SWS schools.

CAPEX

Classroom	40 Lakhs	04 Classroom equipped with desks, teacher table & digital infrastructure
School Bus	20 Lakhs	40-seater school bus for the main school
Playground	30 Lakhs	Playing area equipped with grass carpeting, an athletic track, and fencing
Lab Room & Equipment's	50 lakhs	Math, Physics Chemistry & Biology labs

Our Bank Details

Katakhali Swapnopuron Welfare Society

Account No. - 098301001405

IFSC Code - icic0000983 | ICICI Bank



**“ITS NOT HOW MUCH YOU GIVE,BUT HOW MUCH
LOVE YOU PUT INTO GIVING”
-MOTHER TERESA**



SUPPORT US



 G-137A, Bagha Jatin, Kol - 700086

 8420579906

 ngoswapnopuron@gmail.com

PAN Number: AACAK3810B

10AC (80G): AACAK3810BF20213

10AC (12A): AACAK3810BE20140

Registration Number: S/IL/91212 of 2012-2013

